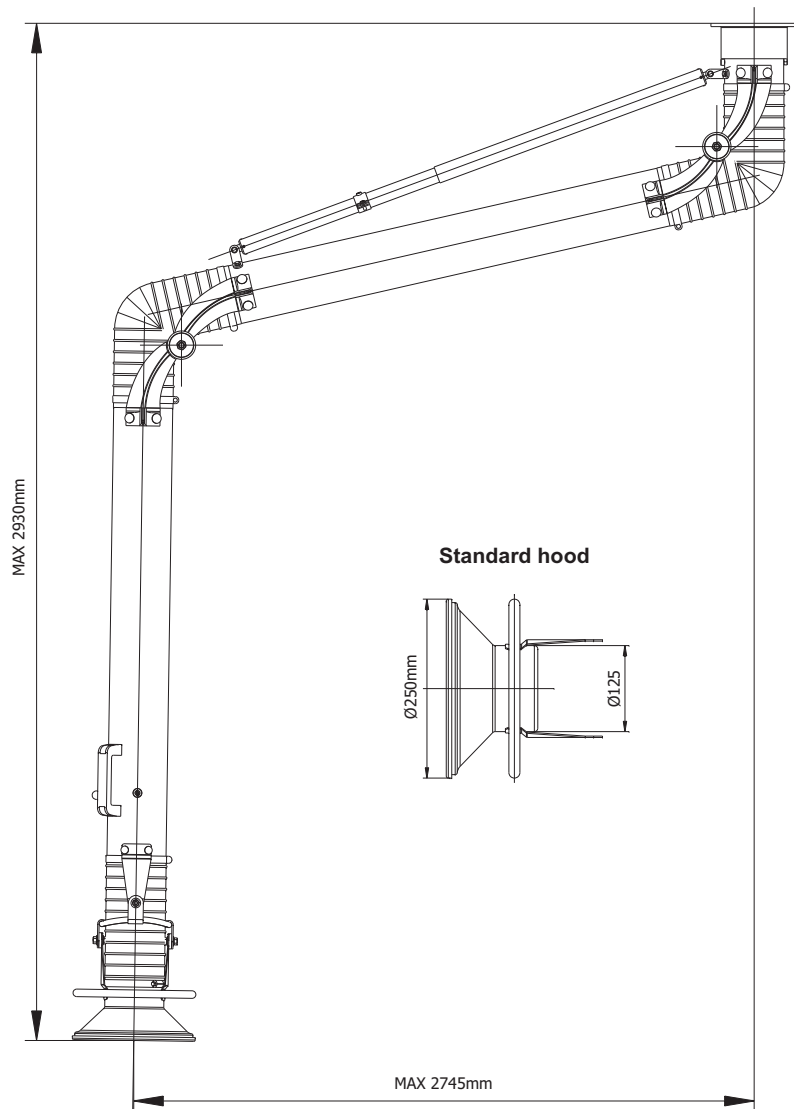
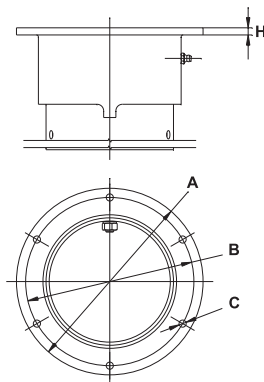


Product: fume extraction arm Ø125 - hanging model

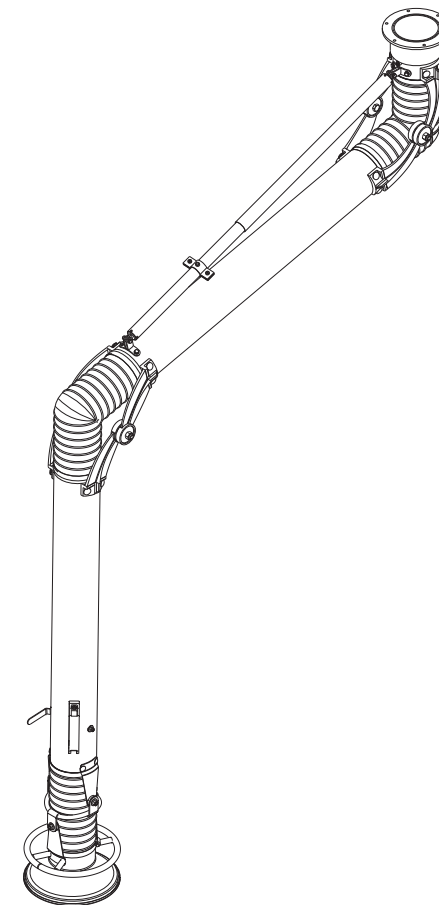
Index: W02-01-1230



**Fume Arm  
Mounting Flange**



H = 7mm  
A = Ø183mm  
B = Ø165mm  
C = 4 holes Ø7mm



**Accessories and options:**

- P07-01-0003 - Mounting bracket WS-125
- P02-80-0001 - MOD A light kit & photo sensor
- P02-80-0002 - MOD L light kit with Switch

**Standard construction:**

- galvanized tubes powder coated color blue RAL5010
- aluminum hood powder coated yellow RAL1028
- external aluminum arm joint parts painted black
- flexible PVC black hose rated (temperature resistance up to 80°C)
- standard built-in manual damper
- all external adjustments and supports
- grab handle all around the hood